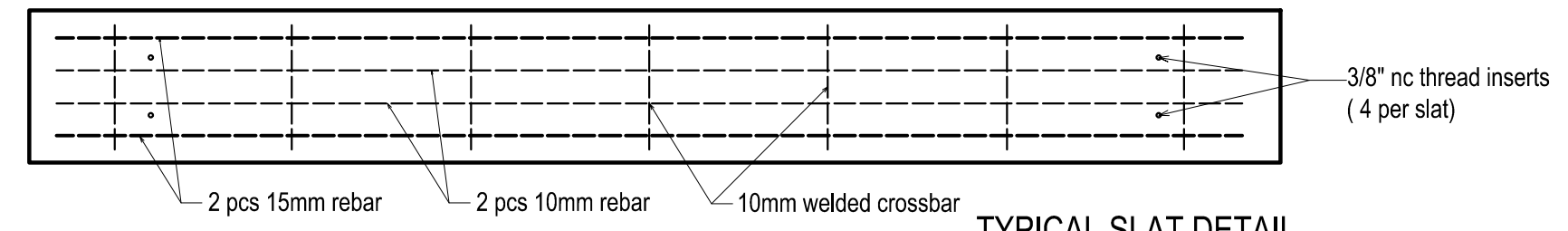


TYPICAL MOUNTING BRACKET DETAIL



TYPICAL SLAT DETAIL

- Columbia table configurations include:
- Standard 6'-0" table
 - Wheelchair accessible 7'-6" table
 - Cedar slats
 - Concrete slats
 - Solid concrete tops
 - Mixed cedar and concrete
 - Plain concrete or polished concrete seats and tops
 - inset laser etched granite chess board

 www.sandersonconcrete.ca	PROJECT DESCRIPTION: COLUMBIA WHEELCHAIR PICNIC TABLE 6'-0" concrete seats and solid 7'-6" concrete table top	DRAWN BY: V. TOSHANOVA	SCALE:
		APPROVED BY:	DATE:
12665 116 Ave Surrey, BC V3V 3S6 Ph. 604-580-4108 toll free 800-671-8882 FAX.604-580-411 info@sandersonconcrete.com			DWG NO:
			REV DATE: Mar 2018